

# ZC3232CPANNS

32 x 32 x 6 inches

## SMC

Lightweight and durable, our SMC Composite is an engineered compound of resin, glass and special fillers formed into sheets. These sheets are then placed under high pressure and heat to liquify the compound, allowing it to flow and take the shape of almost any form imaginable. The results are simple, stylish and a snap to install.



## FEATURES

- Pre-leveled base
- Designed for tile-wall applications
- Slip-resistant, textured bottom
- Extended tiling flange (3T)
- Enhanced front profile
- Available in White and Biscuit only
- Patented design features:
  - corner drainage channels
  - step-design finishing guides
  - extended nailing flange
- Center drain
- Solid SMC material
- Durable high-gloss finish
- 15- year residential limited warranty

## COLOR OPTIONS

Stock

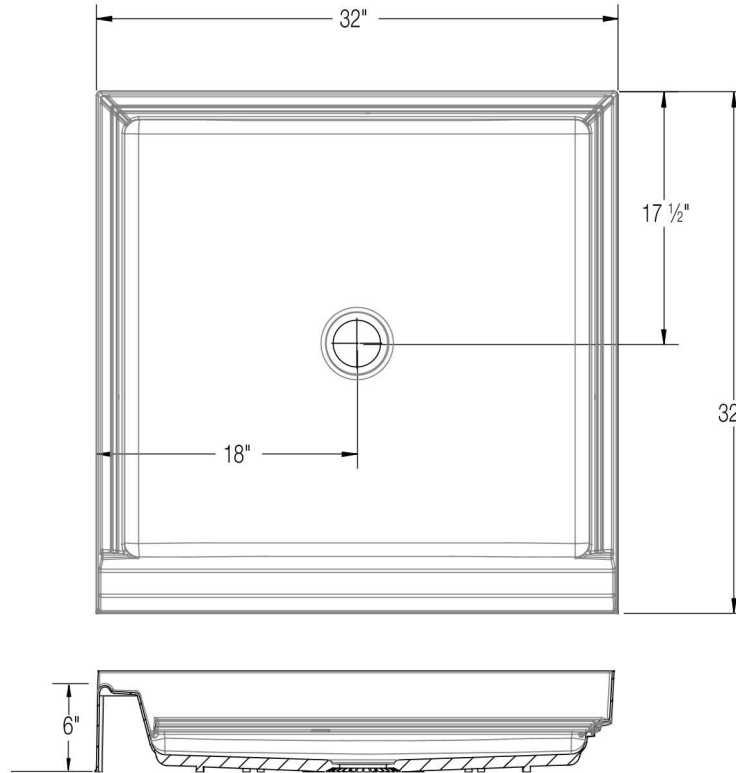
White  
Biscuit

**MAAX**<sup>®</sup>



## ZC3232CPANNS

32 x 32 x 6 inches



**FEATURES** Dimensional Tolerance  $\pm \frac{1}{8}$ ". Dimensions needed for site preparation should be measured from the unit.

Model #	Material	Drain	Net Wt.	Pkg. Wt.
Shower Pan #ZC3232CPANNS	SMC	Center	28	33

### DIMENSIONS inches

Specifications	inches
<b>Width:</b> Overall / Net	32
<b>Depth:</b> Overall / Net	32
<b>Height:</b> Overall / Net	7 / 6
<b>Enclosure Opening</b>	–
<b>Skirt Height</b>	6
<b>Drain Center</b> (from Back Wall)	15 ½
<b>Drain Center</b> (from Side Wall)	16
<b>Drain:</b> Diameter / Clearance	3 ¼ / ⅝

### FRAMING DIMENSIONS inches

Type	D Depth	W Width	H Height	A	B	C
Alcove	32	32	–	Box Out	16	15 ½

